

NSI-SC-5621

Probe Translation Stage



DESCRIPTION

The NSI-SC-5621 is a high accuracy Probe translation stage which is ideal for use in probe motion on an NSI planar near-field measurement system.

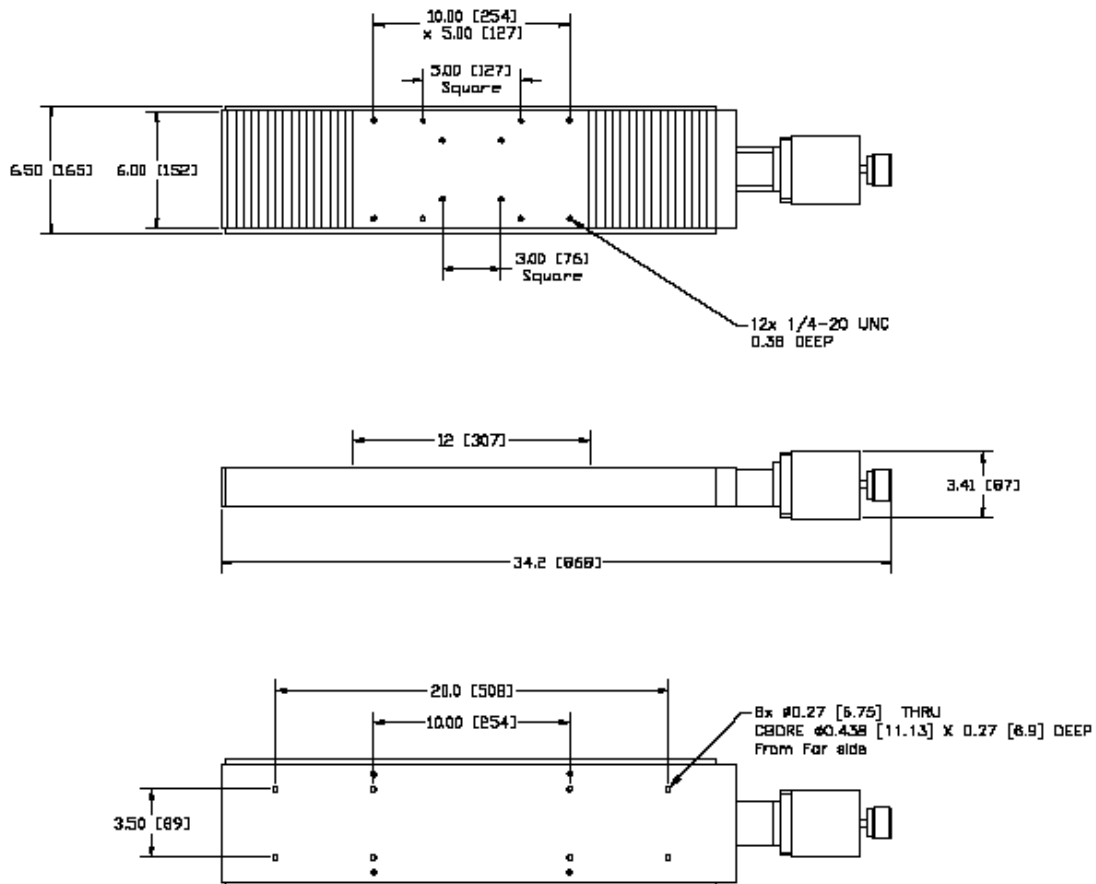
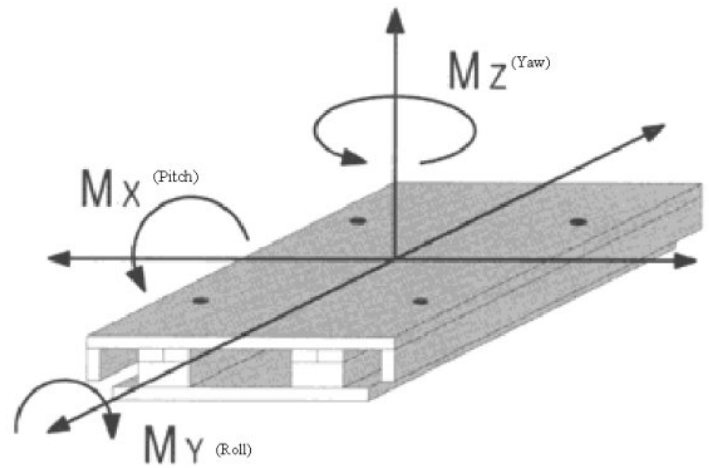
CAPABILITIES

The stage has 10" (250mm) of travel and can support loads up to 2400 lbs(1088kg). The stage interfaces to a standard NSI 2000 antenna range controller (NSI-SC-5911). The stage is typically paired with the NSI-SC-5631 probe rotation stage on NSI's planar near-field systems

FEATURES

- High accuracy / capacity
- Stepper motor driven
- Integral +/- limits

SPECIFICATIONS	
Total centered load	2400 lbs(1088kg)
Bending Moment (Pitch)	1634 in-lbs(185 N-m)
Bending Moment (Roll)	1320 in-lbs(149 N-m)
Bending Moment (Yaw)	1634 in-lbs(185 N-m)
Operating speed	0.5 in/sec(0.0127m/sec)
Mechanical backlash	0.001"(1.025mm)
Travel	10" (250 mm)
Step resolution	0.25 mils (0.00635 mm)
Repeatability	0.001" (0.025 mm)
Accuracy	< 0.002" (0.051 mm) over full travel



DIMENSIONS

- ◆ Width - 6.50" (165 mm)
- ◆ Length - 34.2" (869 mm)
- ◆ Height - 3.41" (87 mm)
- ◆ Weight - 31.5 lbs (14.3kg)

ORDERING INFORMATION

Please contact the NSI Sales department to order this product.

Nearfield Systems, Incorporated

19730 Magellan Drive, Torrance, CA 90502, USA, Tel: 310.525.7000, Fax: 310.525.7100
 Email: sales@nearfield.com. Visit our website: www.nearfield.com